



**TESMEC  
PIPELINE & UTILITIES SOLUTIONS**





## TRENCHING THE PATH TO THE FUTURE

We make it **faster**, thanks to our technology efficiency.

We make it **easier**, thanks to our people expertise.

We make it **cleaner**, containing noise levels and dust.

We reduce the overall **costs**, limiting people and machinery.

We make it **safer**.

We respect the **environment**.

# TESMEC

9 – 12	THE HISTORY
13 – 16	TESMEC ADVANTAGES VS TRADITIONAL METHODS
17 – 20	INTEGRATED VALUE PROPOSITION
21 – 24	OUR METHODOLOGY
25 – 28	THE ADDED VALUE
29 – 94	PRODUCTS OVERVIEW
33 – 38	950R
39 – 44	985
45 – 50	975 EVO
51 – 56	1075
57 – 62	1150 EVO
63 – 68	M5
69 – 74	1475XL EVO
75 – 80	1875XL EVO
81 – 84	LAURINI VULCANO SMART
85 – 88	EXPERIENCE & APPLICATIONS
89 – 92	STATE OF THE ART TECHNOLOGY
93 – 96	CUSTOMER SERVICE

**Tesmec S.p.A.**  
Grassobbio (Italy)

**Saudi Tesmec**  
Riyadh (Saudi Arabia)

**Tesmec USA**  
Alvarado, TX ( USA)

**Marais Laying NZ**  
Wellington, New Zealand

**Tesmec SA**  
Edenvale (South Africa)

**Tesmec Guinea**  
Conakry (République de Guinée)

**Groupe Marais**  
Durtal (France)

**Tesmec Peninsula**  
Doha (Qatar)

**Tesmec Australia**  
Mount Druitt, NSW (Australia)

**Tesmec Energy**  
Algeri, Algeria

**Tesmec Maroc**  
Casablanca (Morocco)

**Marais Cote D'Ivoire**  
Bietry (Cote D'Ivoire)

**Tesmec New  
Technology**  
Beijing (China)





## ***THE HISTORY***



<p><b>1951-1960</b> <b>Pioneer in stringing solutions</b></p>	<p>Establishment of "CRF-Officina Meccanica di Precisione" Edison patent for the new tension stringing system</p>
<p><b>1984</b> <b>TRENCHER product line development</b></p>	<p>Establishment of Tesmec USA Inc. in Texas, USA</p>
<p><b>2010</b> <b>From family to public company</b></p>	<p>Entry in the Italian Stock Exchange (STAR segment)</p>
<p><b>2012</b> <b>Expansion strategy in the RAILWAY business</b></p>	<p>Leasing of AMC2 S.r.l (Monopoli - Italy)</p>
<p><b>2015</b> <b>Acquisition of the French Group Marais</b></p>	

<p>Tesmec Automation as a single Company</p>	<p><b>2017</b> <b>Investments &amp; acquisitions to complete the portfolio for SMART GRIDS</b></p>
<p>Opening of the new Tesmec Rail s.r.l. production site (Monopoli - Italy)</p>	<p><b>2018</b> <b>Investments in R&amp;D and DIAGNOSTICS</b></p>
<p>4Service, a Company dedicated to the rental business</p> <p>Share capital increase</p> 	<p><b>2020</b> <b>Strengthening the Service and Rental Business</b></p>
<p><b>ENERGY TRANSITION</b> <b>DIGITALIZATION</b> <b>SUSTAINABILITY</b></p>	<p><b>2021</b></p> <p><b>2024</b></p>



***TESMEC  
ADVANTAGES  
VS  
TRADITIONAL  
METHODS***

## Productivity

Experience unmatched productivity with Tesmec trenching technology. One trencher can outperform a fleet of traditional machines, making your projects faster and more efficient. Achieve high performances in all rock conditions, including long-distance projects even in the most challenging conditions

## Quality and accuracy

Thanks to Tesmec technology, it is possible to achieve a high quality, uniform trench with constant depth and width, smooth bottom and vertical flat walls

## Excavated material

The excavated material left by the trencher is immediately ready to be handle with a screen to prepare the trench for sand bedding, padding or backfilling according to the necessity, avoiding double handling and extra costs



## Overall cost reduction

Simplify your operations and reduce costs with our trenching technology. Fewer machines and manpower are required, leading to lower logistics expenses, lower fuel costs, and easier site management

## Safety & Sustainability

Ensure safer operations, minimizing people and equipment on site. By using our machines and methodology, you'll reduce CO2 emissions and fuel consumption, as well as limited disturbance

## Traceability

Stay in control of your projects with real-time traceability and georeferenced data of the excavated trenches, and successfully manage your site operations

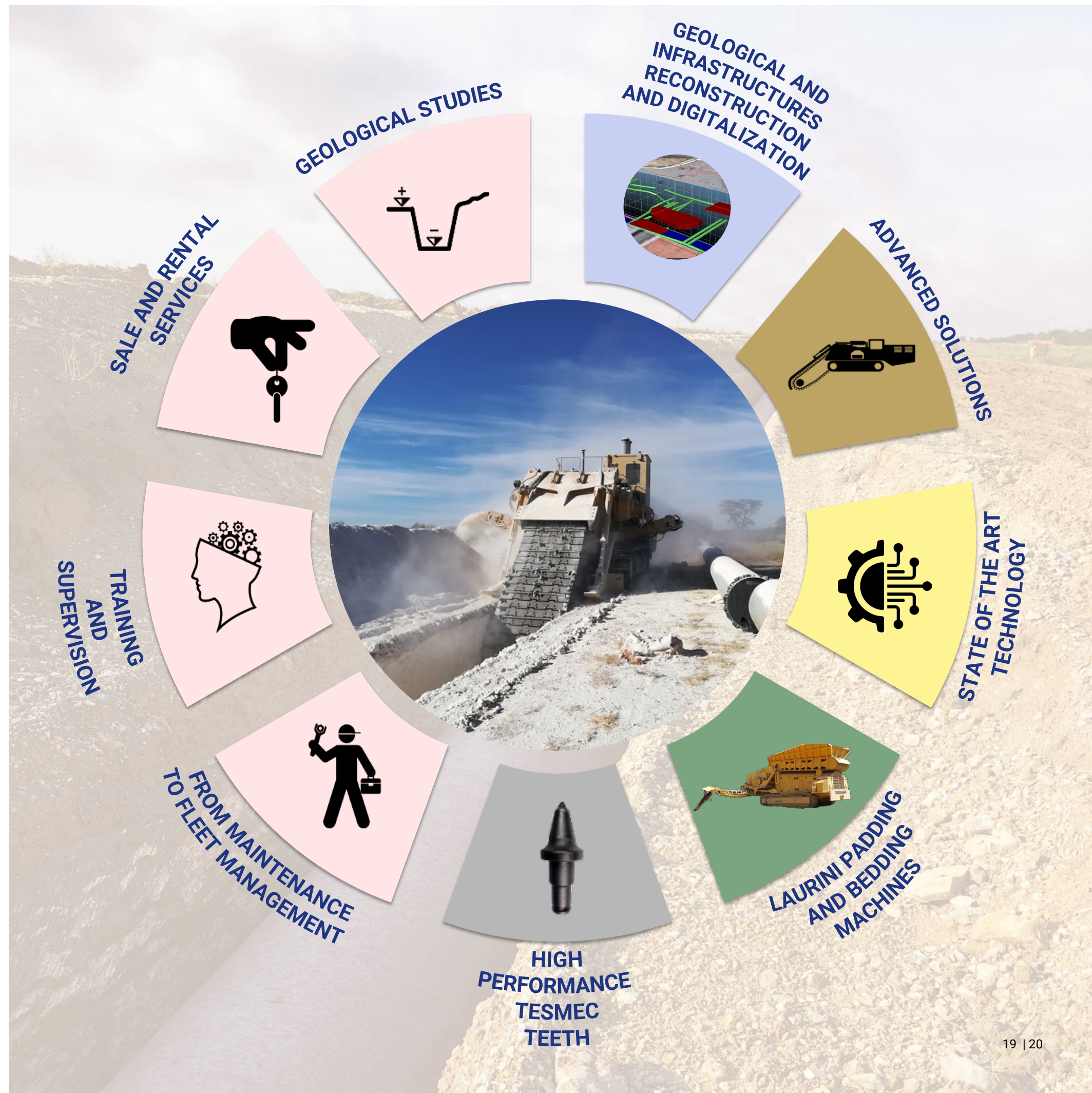


***INTEGRATED  
VALUE  
PROPOSITION***

Tesmec offers **clean and fast solutions** designed for the trench excavation for oil&gas pipeline installation, water and sewage networks and urban drainage works, overcoming environmental and safety issues, increasing productivity, speed of execution, overall quality, site management and maximizing cost savings.

Tesmec provides, manages and supervises an **integrated value chain system**, complemented by:

- Consultancy
- Geology analysis
- Geological and infrastructures reconstruction and digitalization
- Trench opening, cleaning and levelling
- Pilot trench, single cut or double cut
  - Excavated material loading
- Laurini padding and bedding machines
- Site management and supervision



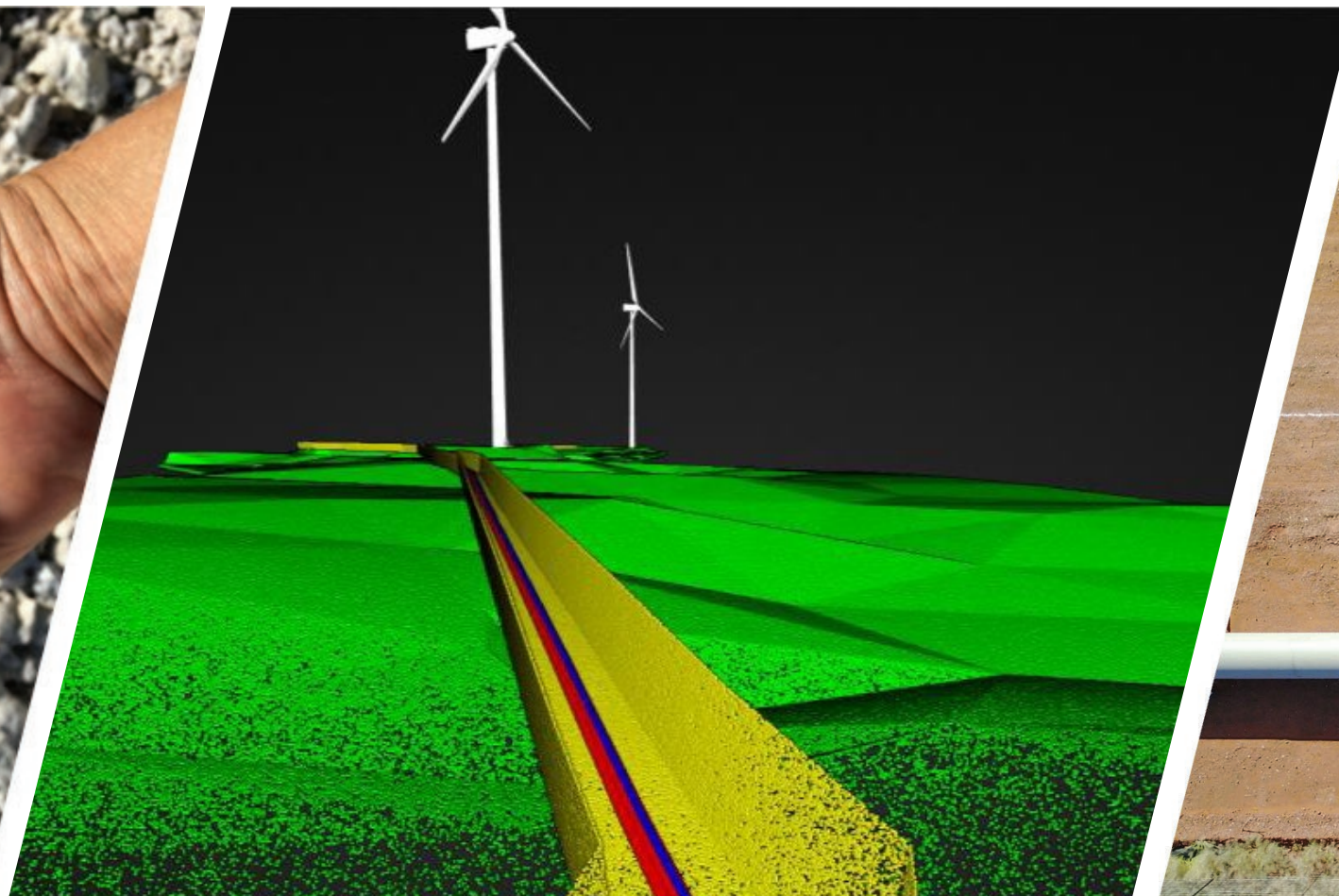


**OUR  
METHODOLOGY**

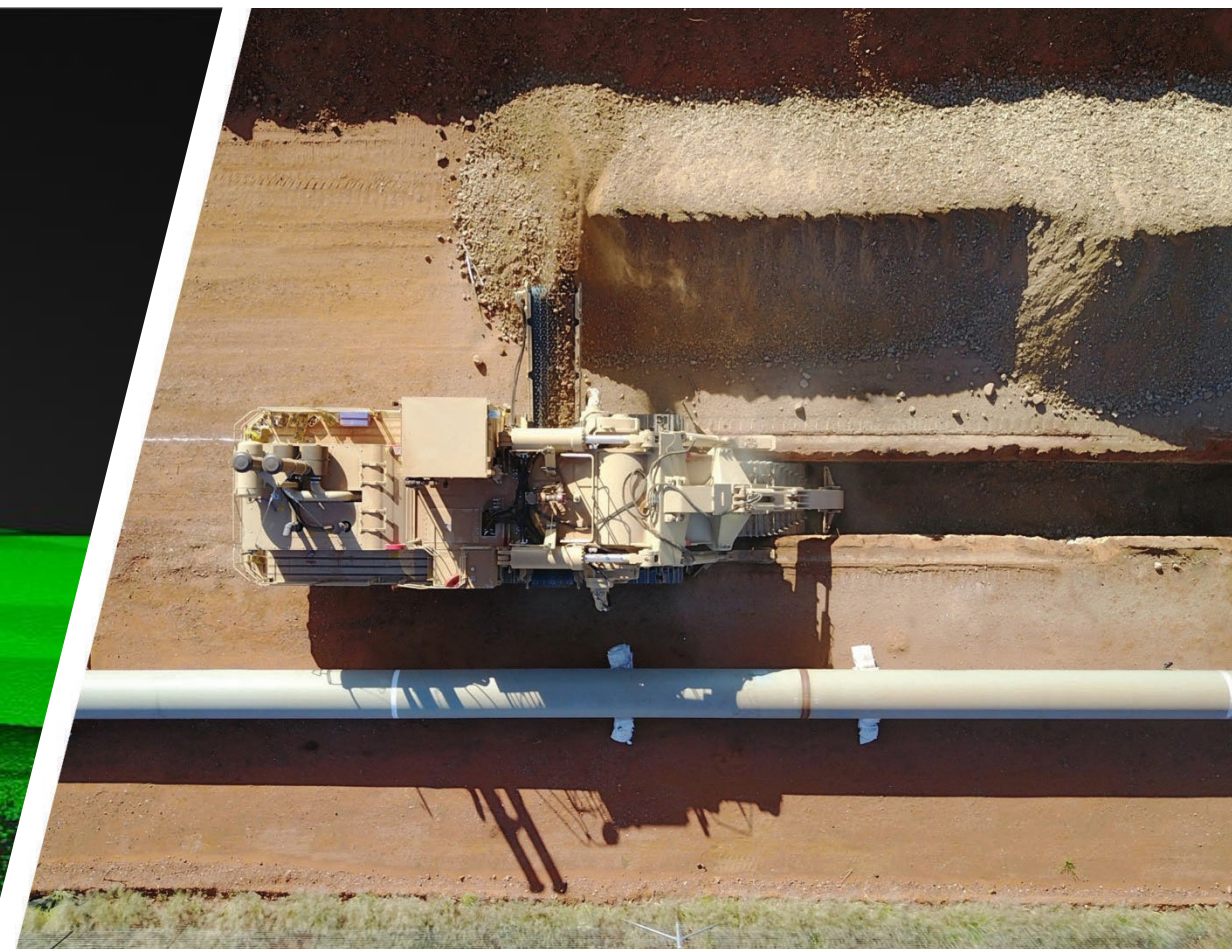
1. CONSULTANCY AND GEOLOGY ANALYSIS



2. UNDERGROUND DETECTION AND MAPPING



3. TRENCH OPENING, CLEANING AND LEVELLING



4. EXCAVATED MATERIAL LOADING



5. PILOT TRENCH, SINGLE CUT OR DOUBLE CUT SOLUTIONS



6. LAURINI PADDING AND BEDDING MACHINES





***THE  
ADDED VALUE***

**Patented flywheel gearboxes**

Final drive of 100% hydraulic power system, protecting the hydrostatic circuit from shocks and overloads and releasing accumulated energy by delivering extra torque on the digging shaft, granting higher productivity in hard rock

**High reliability**

Tesmec trenchers are characterized by high reliability to ensure maximum productivity and uninterrupted work even in double shifts and extreme conditions. In addition, new digging teeth and easier maintenance and servicing keep operating costs to a minimum

**Performances in any terrain**

Tesmec trenchers are incredibly versatile and can work in urban, suburban, and rural jobsites with limited disturbance, guaranteeing outstanding results in all landscapes, from not abrasive and brittle rock to hard and not fractured rock

**State-of-the-art technology**

Rely on Tesmec's state-of-the-art technologies, which enables automatic excavation and self-diagnosis, extreme precise 3D-GPS automatic guidance system, remote monitoring and reporting, and as built data recorder



PERFORMANCES IN ANY TERRAIN



FLYWHEEL GEARBOXES



HIGH RELIABILITY



STATE OF THE ART TECHNOLOGY



***PRODUCTS  
OVERVIEW***



**950R**  
Pag. 33 - 38



**985**  
Pag. 39 - 44



**975EVO**  
Pag. 45 - 50



**1075**  
Pag. 51 - 56



**1150EVO**  
Pag. 57 - 62

**M5**  
Pag. 63 - 68



**1475XL EVO**  
Pag. 69 - 74



**1875XL EVO**  
Pag. 75 - 80



**LAURINI VULCANO  
SMART**  
Pag. 81 - 84





# 950R

- + **IDEAL SOLUTION FOR WATER AND SEWAGE UTILITIES AND GAS PIPELINE**
- + **TRUCK LOADING CONVEYOR**
- + **DIGGING OFFSET ALLOWING FOR ROADSIDE WORK**
- + **LIMITED TRAFFIC DISTURBANCE**
- + **MODULARITY: CHAINSAW, ROCKSAW R620 AND R1000**



Truck loading conveyor

Elevating cab with ROPS

Available attachments:  
Chainsaw, R620 and  
R1000 Rocksaw

Tier 4/Stage V and Tier 3  
CAT C7.1 ACERT  
275 HP (205 kW)

Tilting tracks

85 cm (2' 9") offset from machine  
centerline either direction

Stabilizers



### TECHNICAL DATA

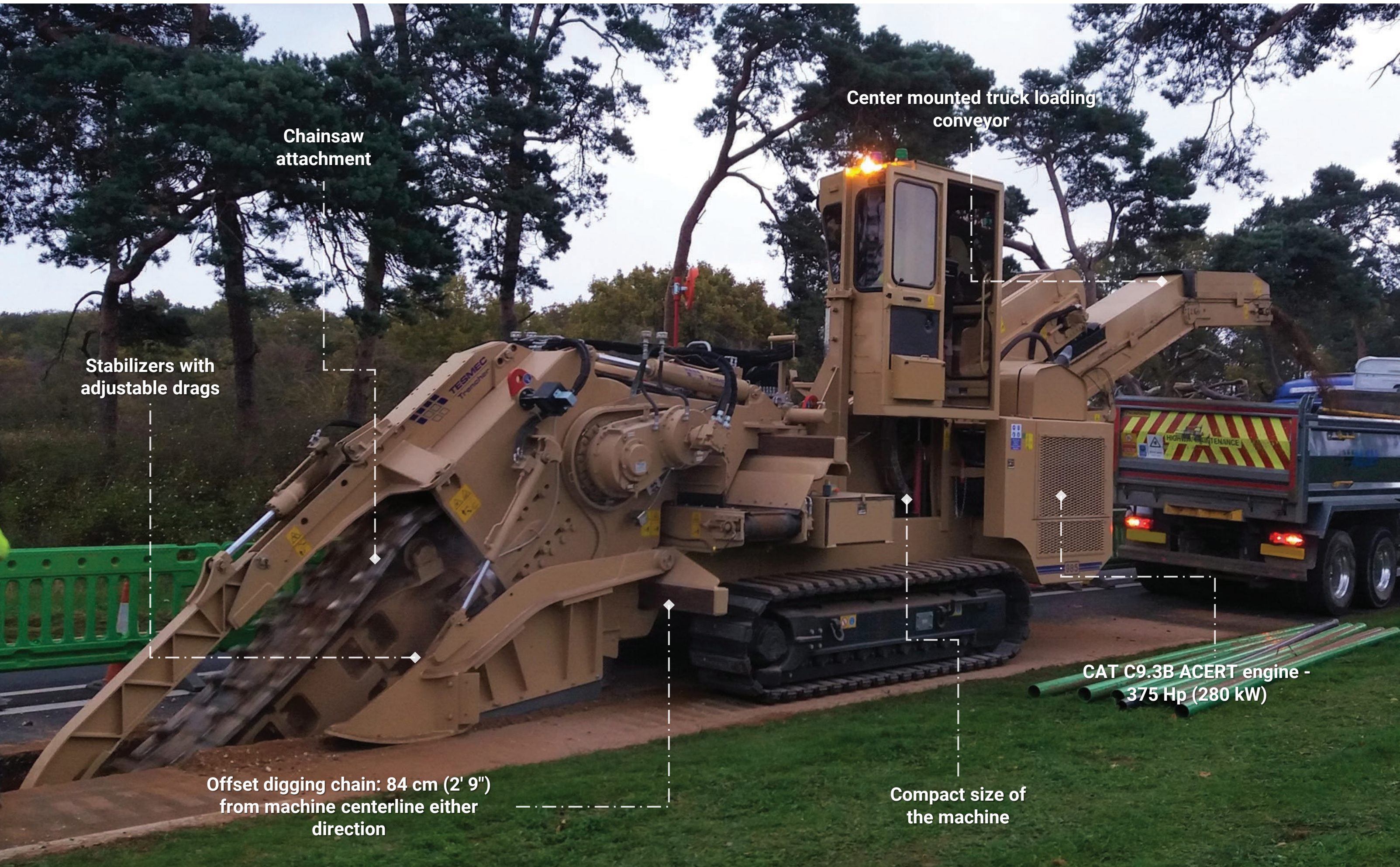
<b>Engine</b>	Tier 4/Stage V	CAT C7.1 ACERT	<b>Digging depth CS</b>	91 - 183 cm   3' - 6'
	Tier 3	CAT C7.1 ACERT	<b>Digging width CS</b>	20 - 63 cm   8" - 25"
<b>Max Power</b>	275 HP (205 kW)			
<b>Weight</b>	20.000 - 26.000 Kg   44.100 - 57.300 lbs			

Tesmc 950R is a versatile trencher designed for in-line excavation for fiber optic installation, power cables, water & gas pipes. It features offset digging chain to work in close proximity to the shoulder of the road, tilting tracks for not levelled grounds, elevating cab and - as main optional - automatic cable laying system, back-filling system and truck loading conveyor. 950R tractor can also be equipped with R1000 and R620 Rocksaw attachments. This machine guarantees speed of execution and extreme accuracy allowing for time and costs savings, as it is able to trench, load materials onto a truck, lay the cable and backfill the trench. Equipped with TrenchTronic 4.0 system, TrenchIntel, Re.M and Smart Tracker to maximize trenching efficiency.



# 985 CS

- + **COMPACT SIZE, DESIGNED FOR URBAN JOB SITES**
- + **OPTIMIZE SPACE UTILIZATION, MANEUVERABILITY WITHIN ONE LANE ROAD WIDTH**
- + **CENTER MOUNTED TRUCK CONVEYOR**
- + **AUTOMATIC LAYING SYSTEM**
- + **EASY TRANSPORT**



Chainsaw attachment

Stabilizers with adjustable drags

Center mounted truck loading conveyor

Offset digging chain: 84 cm (2' 9") from machine centerline either direction

CAT C9.3B ACERT engine - 375 Hp (280 kW)

Compact size of the machine



### TECHNICAL DATA

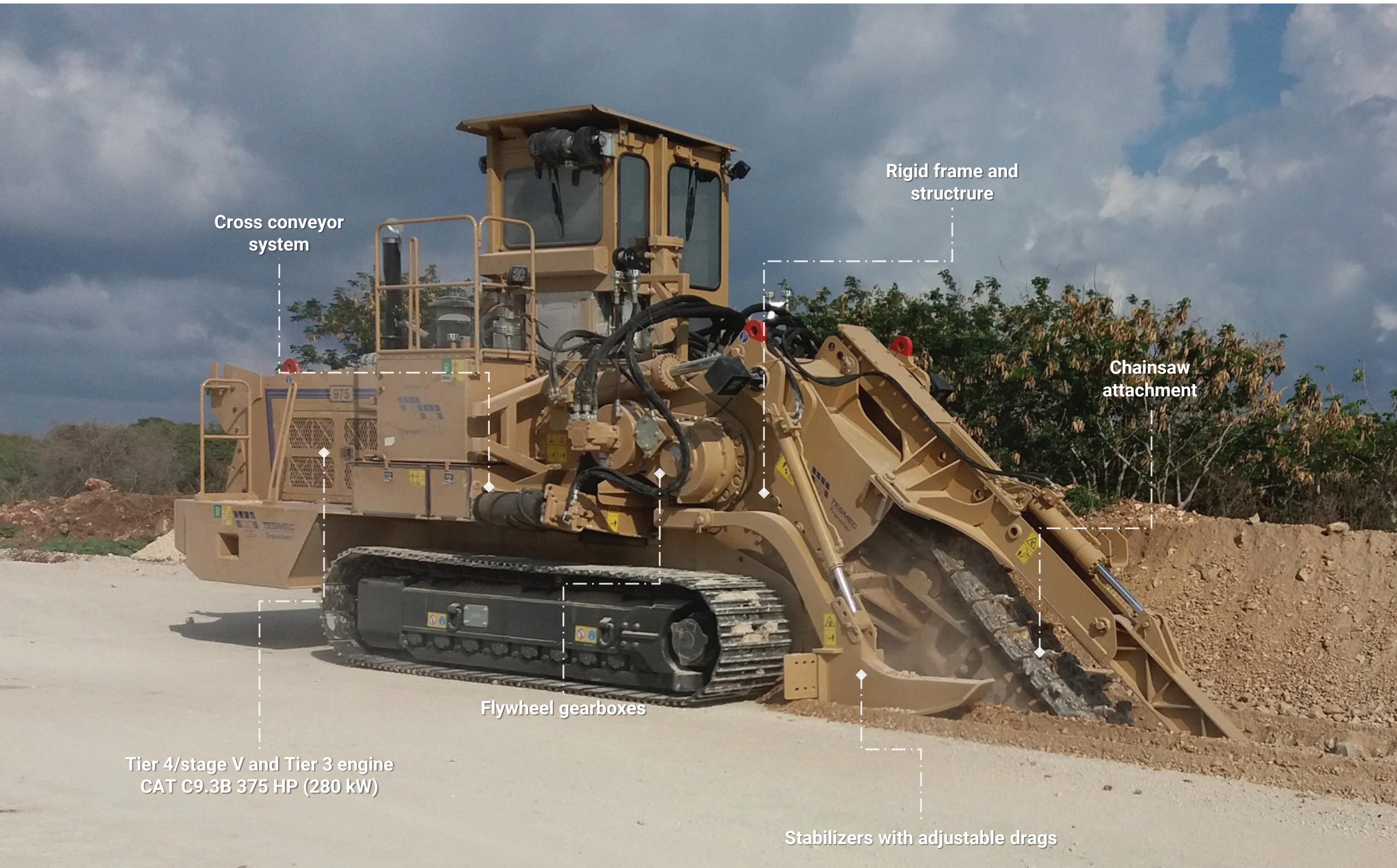
<b>Engine</b>	Tier 4/Stage V	CAT C9.3 ACERT	<b>Digging depth</b>	122 - 183 cm   4' - 6'
<b>Max Power</b>		375 HP (280 kW)	<b>Digging width</b>	Ø30 - 71 cm   12" - 28"
<b>Weight</b>	30.500 - 40.000   kg 67.200 - 88.200 lbs			

Tesmec 985 is a mid-size self-leveling offset chainsaw trencher conceived to satisfy all ranges of customers: from highway constructors to pipeline/energy cables contractors working on projects where space is one of the main issues. Thanks to its compact size, it is designed for urban areas job sites, allowing the maneuverability within one lane road width and the trenching equipment to take any road curves. 985 advantages are the speed of execution, extreme accuracy and time and costs savings as it is an all-in-one machine: is able to trench, load materials onto a truck, lay the cable and backfill the trench. The truck loading conveyor is mounted in the center of the machine, allowing the spoil to be unloaded directly into the truck in front of the machine, thus limiting the space taken up. Equipped with TrenchTronic 4.0 system, TrenchIntel, Re.M and Smart Tracker to maximize excavation efficiency, increase productivity, fleet monitoring and record data.



# 975 EVO

- + **ROCK EXCAVATION**
- + **RIGID FRAME**
- + **AUTOMATIC LAYING SYSTEM**
- + **TRUCK LOADING CONVEYOR EQUIPPED**
- + **MODULARITY: ROCK HAWG ATTACHMENT**



Cross conveyor system

Rigid frame and structure

Chainsaw attachment

Flywheel gearboxes

Tier 4/stage V and Tier 3 engine  
CAT C9.3B 375 HP (280 kW)

Stabilizers with adjustable drags



**TECHNICAL DATA**

<b>Engine</b>	Tier 4/Stage V	CAT C9.3B	<b>Digging depth</b>	122 - 306 cm   4' - 10'
	Tier 3	CAT C9.3B	<b>Digging width</b>	35 - 91 cm   14" - 36"
<b>Max Power</b>	375 hp (280 kW)			
<b>Weight</b>	25.000 - 40.000 kg   55.100 - 88.100 lbs			

Tesmec 975EVO is a mid-size chainsaw trencher conceived for rock excavation in utilities projects such as fiber optic, electric cables, water conduits, pipelines and other. 975EVO Chainsaw features an elevating cabin and can be provided with tilting tracks to work on not levelled grounds and, upon request, it can also fit an automatic laying system for electric cable networks. This chainsaw trencher combines high chain pull and low chain speed thanks to its upgraded flywheels gearboxes. EVO technology guarantees the best performance on hard rocks, increasing productivity and decreasing teeth consumption and maintenance costs. The 975EVO is a modular machine, in addition to the chain attachment, the Rockhawg is also available. It is equipped with Tesmec state of the art technology, such as TrenchTronic 5.0, TrenchIntel, Re.M and Smart tracker to maximize excavation efficiency, increase productivity, fleet monitoring and recording data.



# 1075

- + **HARD ROCK EXCAVATION**
- + **RIGID AND ROBUST FRAME**
- + **MECHANICAL LAYING READY**
- + **ADAPTED TO MULTIPLE APPLICATIONS**
- + **MODULARITY: ROCKSAW AND BUCKET WHEEL ATTACHMENTS**

Tier 4/stage V engine – CAT C9.3B ACERT  
375 Hp (280 kW)

Digging tool adaptable to  
different ground soils

Modularity: chainsaw,  
rocksaw and bucket wheel  
attachments

Cross  
conveyor

Flywheel  
gearboxes

Stabilizers with  
adjustable drags



### TECHNICAL DATA

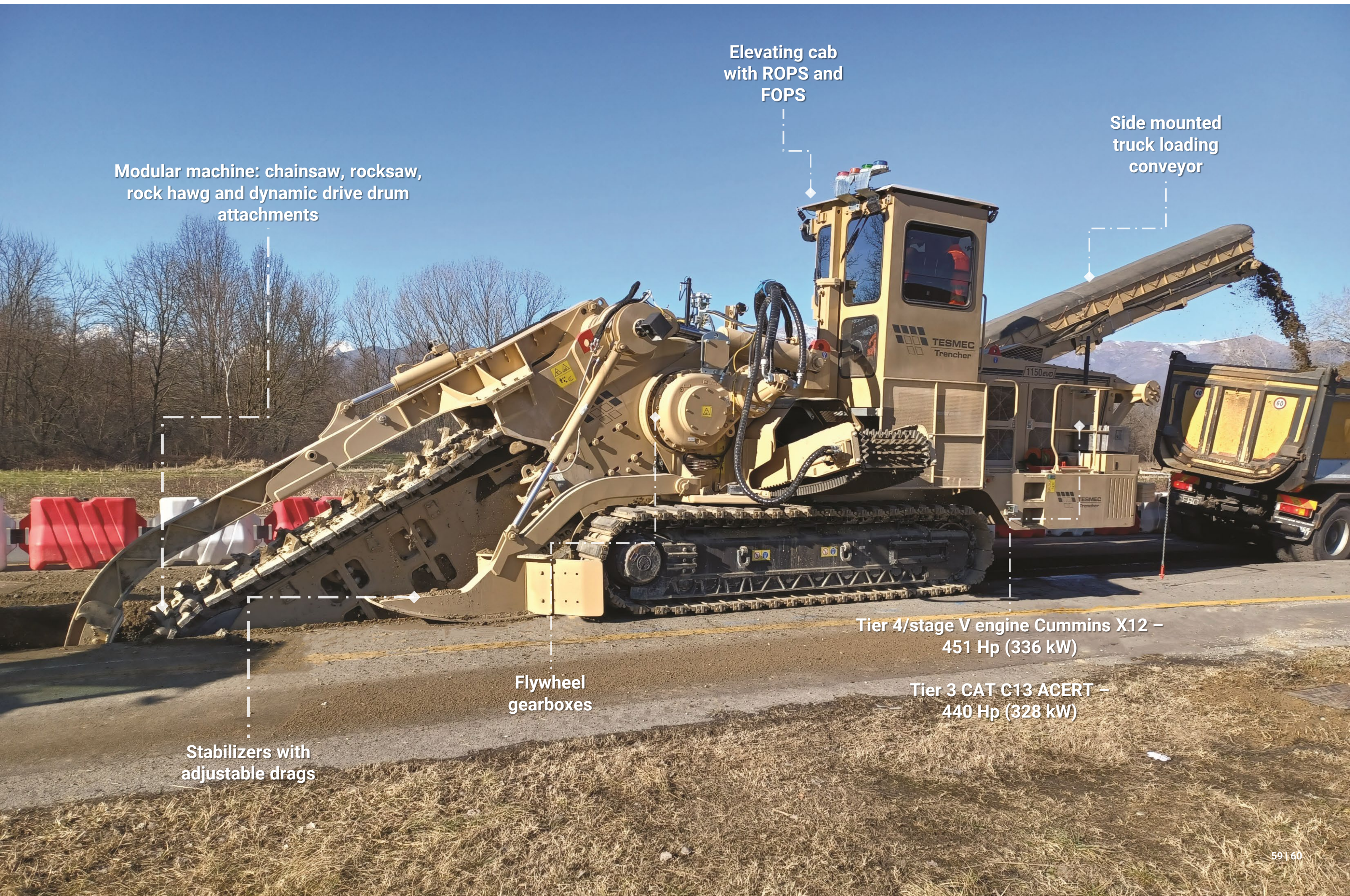
<b>Engine</b>	Tier 4/Stage V	CAT C9.3B ACERT	<b>Digging depth Chainsaw</b>	123 - 305 cm   4' - 10'
<b>Max Power</b>		375 HP (280 kW)	<b>Digging width Chainsaw</b>	35 cm - 91 cm   14" - 36"
<b>Weight</b>	36.700 - 44.500 kg   80.900 - 98.100 lbs		<b>Digging depth Rocksaw</b>	142 cm   4' 8"
			<b>Digging width Rocksaw</b>	15 - 35 cm   6" - 14"
			<b>Digging depth Bucket wheel</b>	244 cm   8'
			<b>Digging width Bucket wheel</b>	51 cm - 102 cm   20" - 40"

Tesmec 1075 is a high-productivity trencher designed for pipelines, utilities and underground energy cables projects in rocky soils. 1075 is a modular machine with the available Chainsaw, Rocksaw and Bucket Wheel attachments. Chainsaw and Rocksaw attachments are the ideal solution for hard rock excavation, thanks to the rigid frame and the mechanical digging drive (flywheel gearboxes) driven by hydrostatic digging transmission. In the meanwhile, the bucket wheel attachment is conceived for pipelines, agricultural applications and utilities projects in dirt and light rocky soils up to 20 MPa. 1075 is equipped with Tesmec state of the art technology, such as TrenchTronic 5.0, TrenchIntel, Re.m and Smart Tracker, to maximize excavation efficiency, increase productivity, fleet monitoring and recording data.



# 1150EVO

- + **ADAPTABLE TO MULTIPLE APPLICATIONS AND SOIL GROUNDS**
- + **RIGID AND ROBUST FRAME**
- + **TRUCK LOADING CONVEYOR EQUIPPED**
- + **OVERPERFORM UP TO 10 EXCAVATORS (of 30 ton)**
- + **MODULARITY: ROCKSAW, ROCK HAWG AND DYNAMIC DRIVE ATTACHMENTS**



Elevating cab  
with ROPS and  
FOPS

Side mounted  
truck loading  
conveyor

Modular machine: chainsaw, rocksaw,  
rock hawg and dynamic drive drum  
attachments

Tier 4/stage V engine Cummins X12 –  
451 Hp (336 kW)

Tier 3 CAT C13 ACERT –  
440 Hp (328 kW)

Flywheel  
gearboxes

Stabilizers with  
adjustable drags



### TECHNICAL DATA

<b>Engine</b>	Tier 4/Stage V	Cummins X12	<b>Digging depth Chainsaw</b>	183 - 427 cm   6' - 14'
	Tier 3	CAT C13 ACERT		<b>Digging width Chainsaw</b>
<b>Max Power</b>	Tier 4/Stage V	451 hp (336 kW)	<b>Digging depth Rock saw</b>	137 cm   4' 6"
	Tier 3	440 hp (328 Kw)		<b>Digging width Rock saw</b>
<b>Weight</b>	44.000 - 57.200 Kg   97.000 - 126.100 lbs			

Tesmec 1150 EVO is a trencher conceived for multiple applications, from mid size pipelines to long-distance fiber optic networks and electric cable projects. 1150EVO is a modular machine available with Chainsaw and Rock saw attachments, as well as Rock Hawg and Dynamic Drive drum for other applications (mining and bulk excavations). This Tesmec trencher allows superior performances compared to traditional digging methods and excavators, granting high performances even in hard rock. The EVO technology guarantees increased productivity, reduced teeth consumption and maintenance costs. The truck loading conveyor, that can be equipped on the tractor with chainsaw attachment, allows to load the excavated material into a truck in front of the machine. The TrenchTronic 5.0, TrenchIntel, Re.m and Smart Tracker state of the art technologies maximize excavation efficiency, increase productivity, fleet monitoring and recording data.



# M5

- + **MECHANICAL DIGGING TRANSMISSION**
- + **TORQUE CONVERTER DRIVE SYSTEM**
- + **HIGHLY ABRASIVE AND EXTREME ROCK CONDITIONS**
- + **HIGH CHAIN PULL AND VERY LOW CHAIN SPEED**
- + **IDEAL IN ROCK MASS UNFRACTURED AND STRONG ROCK**

Elevating, pressurized  
cab with ROPS

Mechanical  
digging  
transmission

Tier 4/stage V engine – CAT C13B ACERT  
496 Hp (370 kW)

Tier 3 engine – CAT C13 ACERT  
440 Hp (328 kW)

Cross conveyor  
system

Stabilizers with  
adjustable drags

Chainsaw  
attachment



**TECHNICAL DATA**

<b>Engine</b>	Tier 4/Stage V	CAT C13B ACERT	<b>Digging depth</b>	
	Tier 3	CAT C13 ACERT	Single chain boom	183 - 244 cm   6' - 8'
<b>Max Power</b>	Tier 4/Stage V	456 HP (340 kW)	Double chain boom	183 - 610 cm   6' - 20'
	Tier 3	440 HP (328 kW)	<b>Digging width</b>	
<b>Weight</b>	63.900 - 80.300 Kg   141.000 - 177.000 lbs		Single chain boom	40 - 56 cm   16" - 22"
			Double chain boom	76 - 107 cm   30" - 42"

M5 is a Tesmec chain trencher equipped with a 456 HP (340kW) Tier 4/Stage V engine or a 440 HP (328 kW) Tier 3 engine and torque converter, characterized by high chain pull and very low chain speed. Oriented toward trenching requirements in highly abrasive and extreme rock conditions, this model can work both single chain and double chain boom. Tesmec M5 has its optimal application in case of rock mass unfractured and strong rock, assuring a reduced teeth consumption. It is conceived for multiple applications, such as pipelines construction, underground powerlines installation and channel excavation. M5 is equipped with Tesmec state of the art technology, such as TrenchTronic, TrenchIntel, Re.m ans Smart tracker to maximize excavation efficiency, increase productivity, fleet monitoring and recording data.



# 1475XL EVO

- + ***XL AND XXL IN CHAINSAW CONFIGURATION***
- + ***630 HP (470 KW) ENGINE, 110 METRIC TON-CLASS***
- + ***ADAPTABLE TO MULTIPLE APPLICATIONS AND SOIL GROUNDS***
- + ***OVERPERFORM UP TO 15 EXCAVATORS (of 30 ton)***
- + ***MODULARITY: CHAINSAW, BUCKET WHEEL AND ROCK HAWG ATTACHMENTS***



XL and XXL versions  
in chainsaw  
configuration

Chainsaw and  
bucket wheel  
attachments

Flywheel  
gearboxes

Rigid frame and  
undercarriage

Elevating cab  
with ROPS and  
FOPS

Stabilizers with  
adjustable drags

Cross conveyor  
system

Tier 4/stage V and Tier 3 engine:  
CAT C18 ACERT – 630 HP (470 kW)



### TECHNICAL DATA

<b>Engine</b>	Tier 4/Stage V	CAT C18 ACERT	<b>Digging depth Chainsaw</b>	244 - 488 cm   8' - 16'
	Tier 3	CAT C18 ACERT		<b>Digging width Chainsaw</b>
<b>Max Power</b>	Tier 4/Stage V	630 HP (470 kW)	in XXL configuration	
	Tier 3	630 HP (470 kW)		<b>Digging depth Bucket wheel</b>
<b>Weight</b>	77.000 - 115.000 Kg   169.700 - 253.000 lbs		<b>Digging width Bucket wheel</b>	91 - 168 cm   3' - 5' 6"

Tesmec 1475EVO is a high performance, 630HP engine equipped trencher, conceived for the in-line excavation for mid to big size pipelines. This is available with Chainsaw attachment (in XL or XXL versions), ideal on hard and abrasive rock, and Bucket Wheel attachment, conceived for big diameter pipelines and utilities projects in dirt and light rocky soils. 1475EVO allows superior performances compared to traditional digging methods/excavators. This model is available also with a Rockhawg attachment, designed for bulk excavation projects and continuous surface mining. 1475XL EVO Chainsaw combines high chain pull and low chain speed thanks to its upgraded flywheels gearboxes and new hydraulic components. EVO technology guarantees the best performance on hard and abrasive rocks, increasing productivity and decreasing teeth consumption and maintenance costs. 1475EVO is equipped with Tesmec state of the art technology, such as TrenchTronic 5.0, TrenchIntel, Re.m and Smart tracker to maximize excavation efficiency, increase productivity, fleet monitoring and recording data.



# 1875XL EVO

- + **LARGEST AND MOST POWERFUL TESMEC TRENCHER**
- + **950 HP (709 KW) ENGINE, 120 - 160 METRIC TON-CLASS**
- + **ADAPTABLE WITH DOUBLE AND TRIPLE CHAIN BOOM**
- + **IDEAL FOR BIG PROJECTS IN EXTREME DIGGING CONDITIONS**
- + **RIGID FRAME AND UNDERCARRIAGE**

Tier 4/stage V engine: CAT C27 ACERT – 950 Hp (709 kW)  
Tier 2 engine: CAT C32 ACERT – 950 Hp (709 kW)

Flywheel gearboxes

Rigid frame and undercarriage

Cross conveyor system

Stabilizers with adjustable drags

Chainsaw attachment with double and triple chain boom



**TECHNICAL DATA**

<b>Engine</b>	Tier 4/Stage V	CAT C27 ACERT	<b>Digging depth Chainsaw</b>	244 - 732 cm   8' - 24'
	Tier 2	CAT C32 ACERT		<b>Digging width Chainsaw</b>
<b>Max Power</b>	Tier 4/Stage V	950 HP (709 kW)		
	Tier 2	950 HP (709 kW)		
<b>Weight</b>	120.000 - 160.000 Kg   253.000 - 341.700 lbs			

Tesmec 1875XL EVO is a revolutionary chainsaw trencher equipped with a 950 HP engine that redefines digging performances, excelling even in the toughest conditions. Tailored for large-diameter pipelines in hard and abrasive rock, it surpasses industry standards overperforming traditional methods, and can be adapted to work both double chain and triple chain boom to reach 732 cm (24') of depth and 213 cm (84") of width. 1875XL EVO, the largest and most powerful Tesmec trencher ever produced, combines high chain pull and low chain speed thanks to its upgraded flywheels gearboxes and new hydraulic components. EVO technology guarantees the best performance on hard and abrasive rocks, increasing productivity and decreasing teeth consumption and maintenance costs. 1875XL EVO is equipped with Tesmec state of the art technology, such as TrenchTronic 4.0, TrenchIntel, Remans Smart tracker to maximize excavation efficiency, increase productivity, fleet monitoring and recording data..



## **LAURINI VULCANO SMART**

- + **SCREENING PADDING MACHINE**
- + **HOPPER WITH PANELS FIXED IN SHAPE WITH THE SHIPPING DIMENSIONS**
- + **APRON FEEDER WITH ADJUSTABLE SPEED**
- + **SELF-PROPELLED WITH REMOTE CONTROL**
- + **RETRACTABLE AND FOLDABLE CONVEYOR BELT**



### TECHNICAL DATA

<b>Engine</b>	CAT C4.4 ACERT	<b>Standing mesh opening</b>	5 mm - 80 mm   0.2" - 3.15"
<b>Max Power</b>	142 HP (106 kW)	<b>Max size entry material</b>	400 mm   15.7"
<b>Weight</b>	22.000 Kg   48.500 lbs	<b>Max output</b>	200 m3/h   880.57 gpm

Laurini Vulcano Smart is a compact screening padding machine set up on a trucked self-propelled undercarriage with remote control. The screen grids are interchangeable, and the apron feeder speed is adjustable. The side to side rear conveyor belt is retractable and foldable. Features, together with the high reliability, make Vulcano a versatile machine, fitting for any sort of soil and suitable for different right of way conditions. By combining a Tesmec trencher and a Laurini screening padding machine, it is possible to obtain an extended value proposition, providing a comprehensive 360-degree solution with high added value, quality and efficiency across worldwide job sites in the pipeline sector.



***EXPERIENCE  
&  
APPLICATIONS***



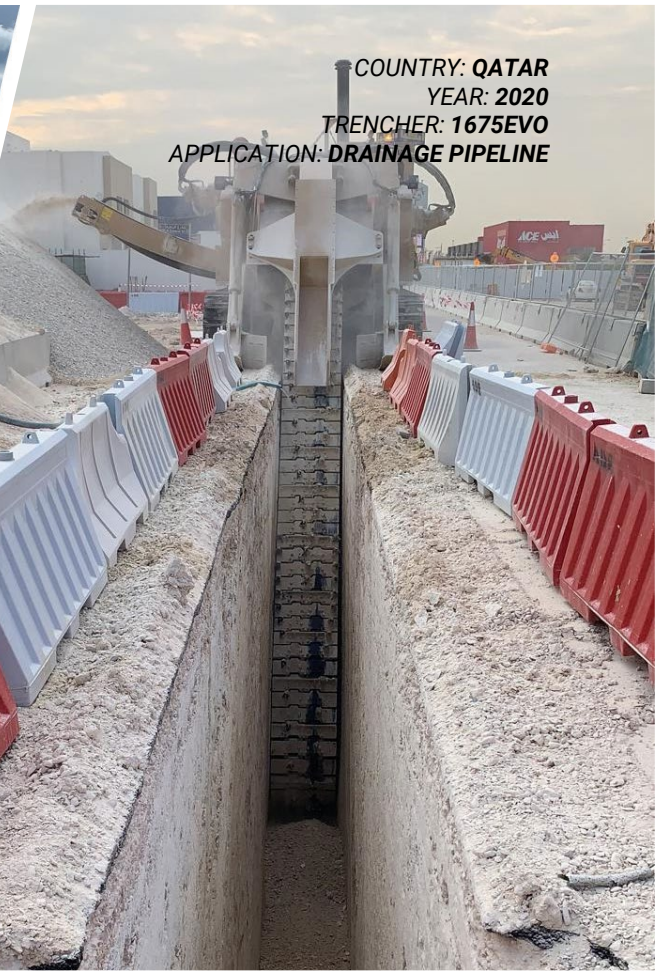
COUNTRY: SAUDI ARABIA  
YEAR: 2018  
TRENCHER: 1475  
APPLICATION: WATER PIPELINE



COUNTRY: GREECE  
YEAR: 2017  
TRENCHER: 1675  
APPLICATION: GAS PIPELINE



COUNTRY: UK  
YEAR: 2022  
TRENCHER: 975EVO  
APPLICATION: WATER PIPELINE



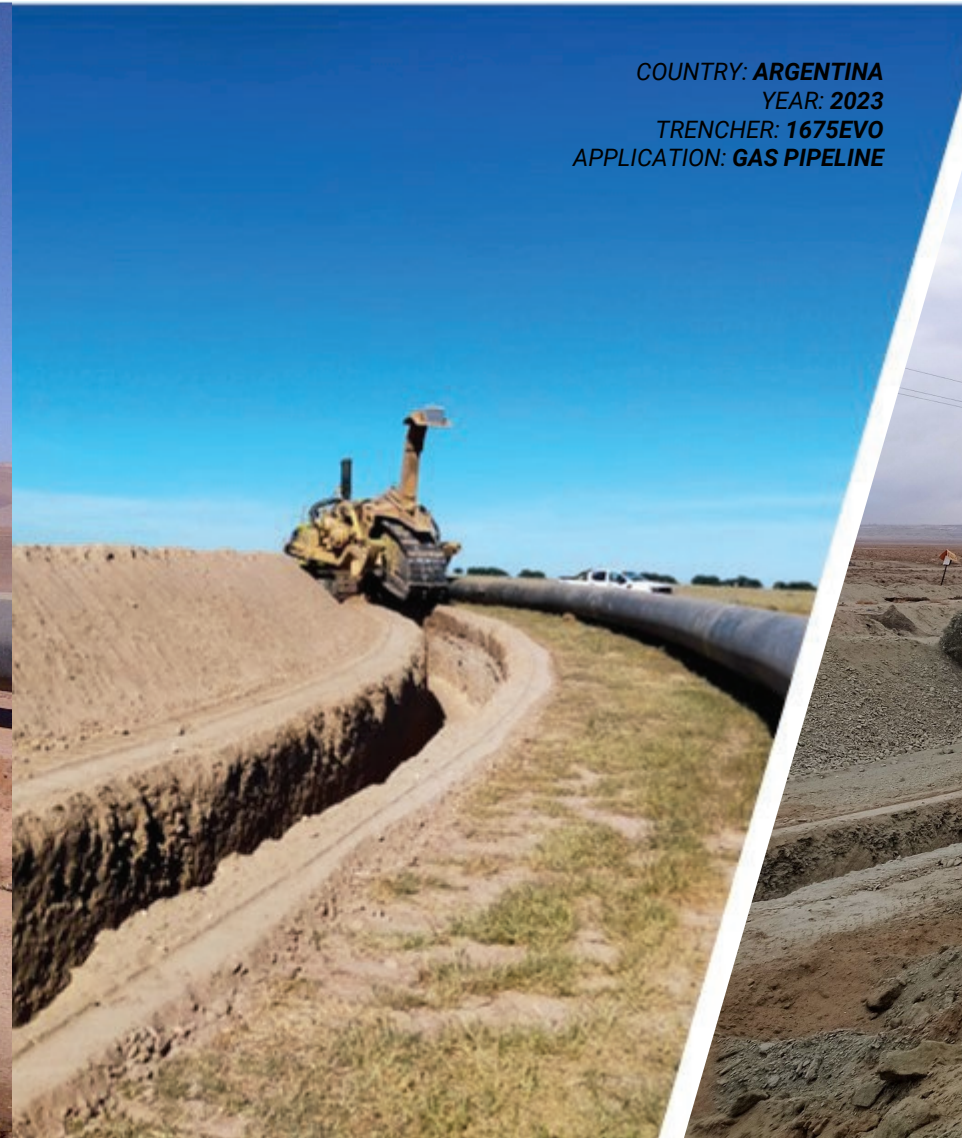
COUNTRY: QATAR  
YEAR: 2020  
TRENCHER: 1675EVO  
APPLICATION: DRAINAGE PIPELINE



COUNTRY: MEXICO  
YEAR: 2018  
TRENCHER: 1675  
APPLICATION: GAS PIPELINE



COUNTRY: CHILE  
YEAR: 2016  
TRENCHER: 1675  
APPLICATION: WATER PIPELINE



COUNTRY: ARGENTINA  
YEAR: 2023  
TRENCHER: 1675EVO  
APPLICATION: GAS PIPELINE



COUNTRY: KAZAKHSTAN  
YEAR: 2020  
TRENCHER: 1475EVO XXL  
APPLICATION: GAS PIPELINE



**STATE OF THE  
ART  
TECHNOLOGY**

**TrenchTronic 5.0:**

the automatic trenching and self diagnostic technology. It is an electronic control system designed to improve the ease of use of the trencher and increase productivity by making it less dependent on operator skills.

**TrenchIntel:**

The 3D-GPS automatic guidance system. It is the satellite guidance system capable to automatically control machine steering, trajectory and trenching depth with extreme precision

**Re.M:**

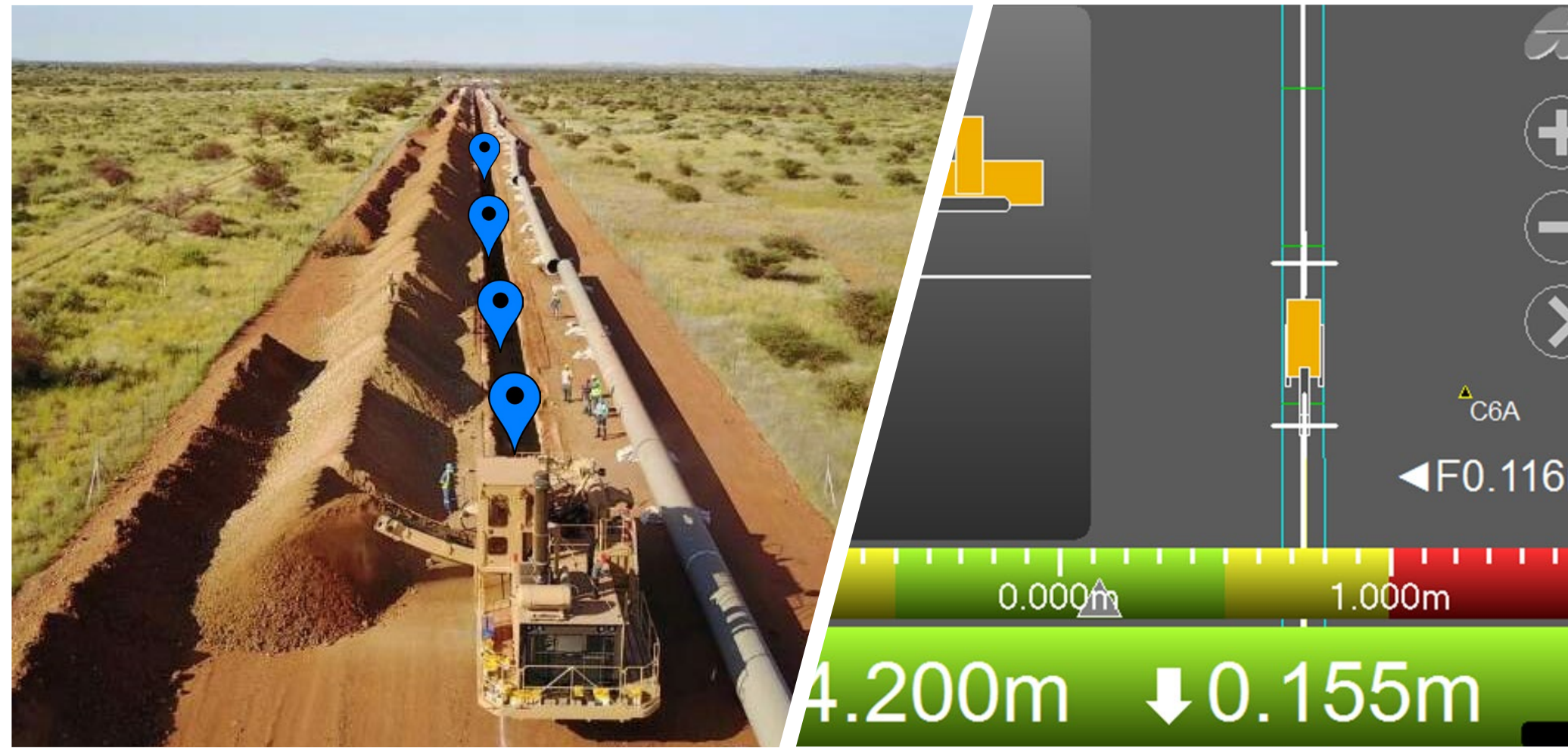
the remote monitoring and reporting technology. It provides on-demand retrieval of operating, maintenance and troubleshooting information to help improving each machine's bottom-line performance.

**Smart tracker**

The as built data recorder. SmartTracker automatically collects as-built data while the machine is trenching, avoiding survey stakeout and reducing time and costs

**TRC**

The trencher radio control system. It enables the operator to control the machine remotely through a radio control, increasing the safety in site, the visibility on the trenching area and tool.





***CUSTOMER  
SERVICE***

**After sales and customer service**

- Inspections and machine Start-up
- Machine operation and repair
- Worldwide fleet remote monitoring and assistance
- Technological support, monitoring and analysis of machine data to optimize utilization
- Jobsite management
- Machine data monitoring

**Consultancy and studies**

- Expertise
- Know-how
- Feasibility studies
- Technical advice and consultancies
- Geotechnical analysis

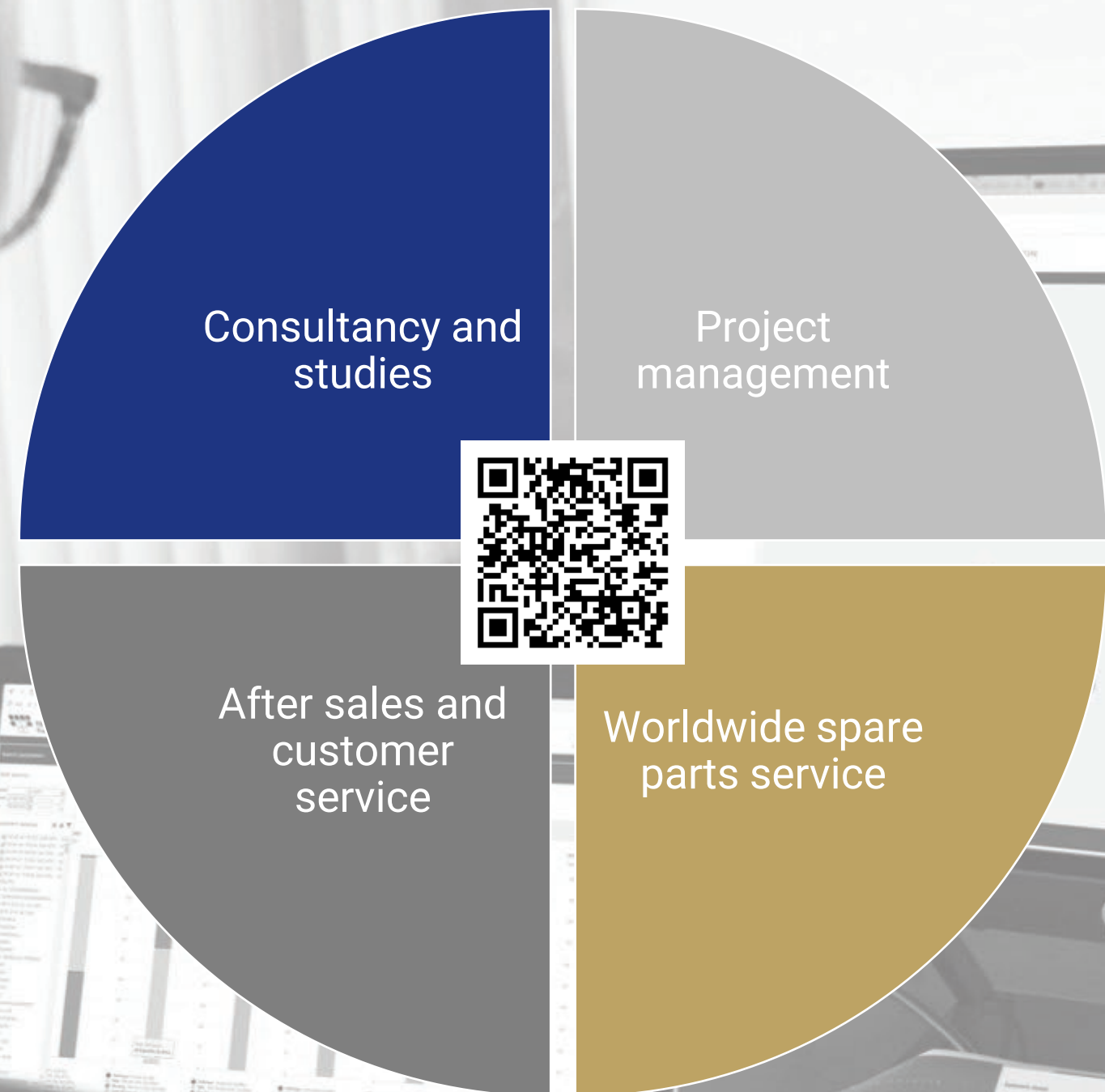
**Project management**

- Services and solutions for all digging projects
- Work site control and experienced operators
- Spare parts management
- Specialized Tesmec team for mechanical assistance

**Spare parts service**

- Worldwide reaching
- Support in defining jobsite spare parts assortment
- Mobile workshops and mobile warehouses
- Interparts portal for original Tesmec spare parts

**\* SCAN TO ACCESS TESMEC AFTER SALES AND SPARE PARTS SERVICE**



# TESMEC

Discover Tesmec unique Customer Experience

