

400MCT CS1200



Tesmec 400MCT with CS1200 is a 15 metric ton-class trencher featuring a 238 Hp (175 kW) tier 4 engine/ Stage V, or a 218 Hp (160 kW) tier 3 engine, designed for telecom and energy cables projects in urban and extra-urban areas

STANDARD FEATURES

Productivity Exploit the productivity of 400 MCT tractor and CS1200 chainsaw attachment, with an hydraulic offset of 70 cm (2' 4") from machine centerline either direction, an extra offset kit of max 34 cm (1' 1"), +/- 12° hydraulic tilt (rotation about horizontal axis) and +/- 13° hydraulic pivot (rotation about vertical axis). These are offered as standard together with crumbshoe, TrenchTronic and Re.M.

Modularity Enhance 400MCT potential thanks to its modularity. This model is available also with R670 axial wheel, RT1100 tangential wheel and VP1100 vibratory plow, making it the ideal solution for multiple applications.

Remote controlled Experience the radio control system, which enables the operator to control the machine remotely, increasing the safety in site, the visibility on the trenching area and on the trenching tool.

OPTIONAL FEATURES

- Side mounted truck loading conveyor, not foldable and swivelling end
- Reel carrier, rollers and laying box for mechanical laying
- Rubber track pads
- Smart Tracker

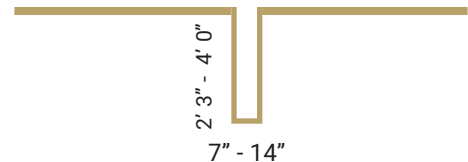
STATE OF THE ART TECHNOLOGY

TrenchTronic (standard) Electronic control with operator selectable digging pressure, fully automatic operation, and remote diagnostic system

Re.M (standard) The remote monitoring system with machine data remote monitoring, fleet location management, troubleshooting information and operating conditions

Smart tracker (optional) Automatically collects as-built data while the machine is trenching, avoiding survey stakeout and achieve the complete digitalization of the jobsite

TRENCHING DIMENSIONS



TRANSPORT DIMENSIONS

	US	METRIC
Length	894 cm	29' 4"
with truck loading conveyor	1206 cm	39' 7"
Width	228 cm	7' 6"
with truck loading conveyor	255	8' 4"
Height	261 cm	8' 7"
with truck loading conveyor	289 cm	9' 6"
Weight	14,500 - 15,500 Kg	31.900 - 34.100 lbs
Ground pressure	0.75 - 0.80 kg/cm ²	10.6 - 11.3 psi

ENGINE

	US	METRIC
Model and Max HP (kW)		
Tier 4/Stage V VOLVO TAD583VE	238 HP (175 kW)	238 HP (175 kW)
Tier 3 VOLVO TAD552VE	218 HP (160 kW)	218 HP (160 kW)
Max no load rpm	1,700 RPM	1.700 RPM
Fuel tank capacity	50.2 gal	190 L
Fuel consumption (at full load)		
Tier 4/Stage V	11.04 gal/hr	41.8 L/hr
Tier 3	11.62 gal/hr	44 L/hr

AD Blue/DEF consumption

Tier 4 / Stage V	0.68 gal/hr	2.59 L/hr
------------------	-------------	-----------

Cooling rating

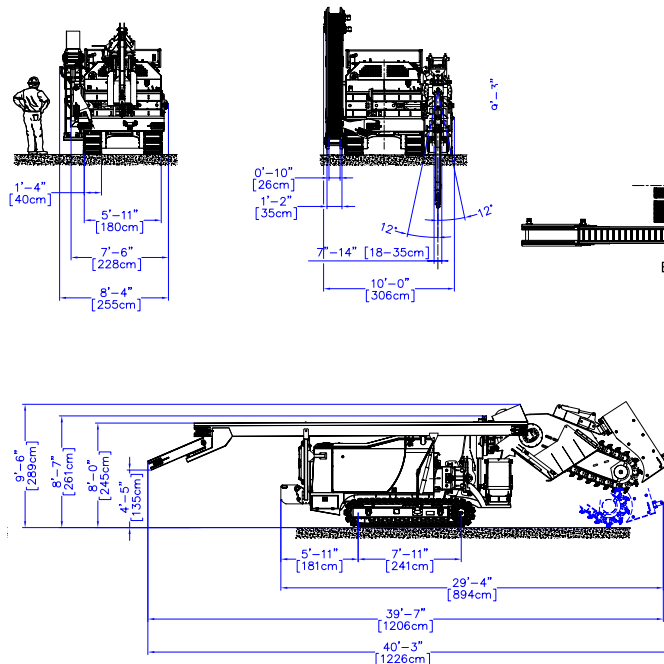
	130°F ambient air	54°C ambient air
--	-------------------	------------------

Air cleaner

	Power Core
--	------------

TRACKS

	US	METRIC
Track chain type	FL4	
Track length	7' 11"	241 cm
Track pad width	1' 4"	40 cm
Track pad type	Triple grouser (single available as option)	
Self-leveling (tilting) undercarriage	0' 8"	20 cm



CRAWLER DRIVE

	US	METRIC
Drive	Hydraulic open circuit, planetary transmission	
	Full counter rotation	
Infinitely variable speed	Forward and reverse	
Working speed	0 - 0.72 mph	0 - 1.16 km/h
Transfer speed	0 - 1.20 mph	0 - 1.93 km/h
Parking and service brake	Spring applied, hydraulic release, wet disc brake	

DIGGING DRIVE

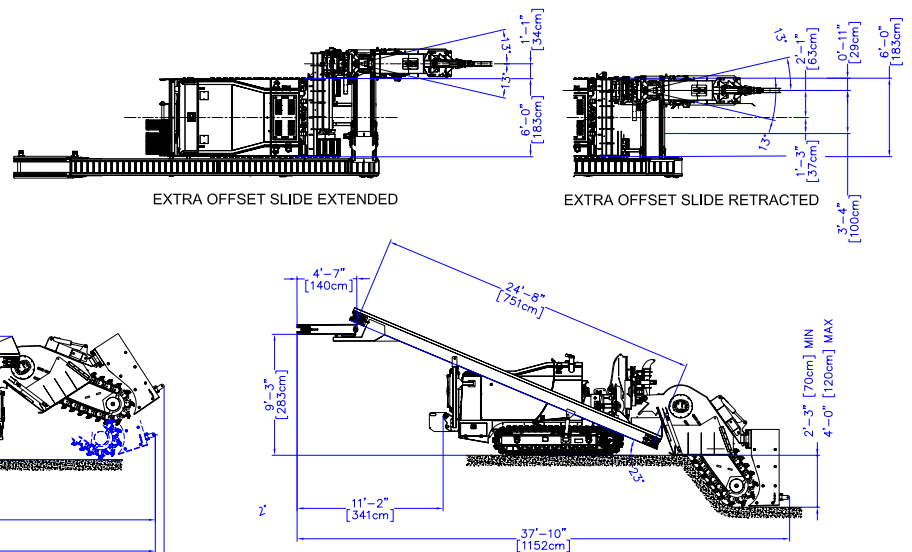
	US	METRIC
Drive	Hydrostatic, one variable displacement pump and one motor	
Digging speed ranges	0 - 630 fpm	0 - 192 m/min
Digging chain	Tesmec single strand with 4.5" (11.4 cm) pitch chain, "K" or "M" style	
Cutters	Rotary carbide tipped	
Cutters shank diameter	7/8"	2.2 cm
Cutters gage	2"	5.1 cm

TRUCK LOADING CONVEYOR

	US	METRIC
Reversible and shiftable	Yes	
Conveyor belt speed	0 - 385 fpm	0 - 117 m/min
Conveyor discharge direction	Right or left	
Conveyor belt width	1' 2"	35 cm
Conveyor length	8' 3"	250 cm
Discharge height	2' 5"	74 cm

TRUCK LOADING CONVEYOR WITH SWIVELING END (OPTIONAL)

	US	METRIC
Conveyor belt speed	0 - 385 fpm	0 - 117 m/min
Conveyor belt width	1' 2"	35 cm
Conveyor length	25' 11"	790 cm
Discharge height	9' 10"	300 cm



Pictures & drawings can be different according to technical specifications - Updating programme variations without notice are possible

TESMEC
draw the way forward

in YouTube Instagram Facebook
www.tesmec.com